

承 认 书

APPROVAL SHEET

客户名称:

Customer

品 名:

轴向引线陶瓷积层电容器

Product Name

Axial Leaded Laser-Mark Ceramic Capacitor

规 格:

CC42-XXX X XX XX XXX X XX

Product Spec.

CT42-XXX X XX XX XXX X XX

版 本 号:

V1.0

Version Number

日 期:

2016-05-31

Date

客户 Customer			制造 Manufacturer		
确认 Approval			确认 Approval		
检验 Inspector	审核 Checker	批准 Approver	拟制 Designer	审核 Checker	批准 Approver

特点

Feature

*体积小，容量大，适合自动安装的卷（编）带包装。

Miniature size, large capacitance, tape and reel packaging suitable for auto-placement

*环氧树脂封装，从而具有优良的防潮性能、机械强度及耐热性。

Epoxy resin coating creates excellent performance in humidity resistance, mechanical strength and heat resistance

*工业生产标准尺寸及多种脚型产品。

Standard size, various lead configuration

介质种类 Dielectric Type	I 类介质 Class I	II 类介质 Class II		
介质材料 Dielectric Material	温度补偿型 Temperature Compensating	X7R (B)	Z5U(E)	Y5V(Y/F)
电气性能 Electrical Properties	电气性能最稳定，几乎不随温度、电压和时间的变化而变化。 The electrical properties is the most stable one and has little change with temperature, voltage and time.	具有较高的介电常数，容量可做到比 I 类电容器高，具有稳定的温度特性。 X7R material has high dielectric constant, and its capacitance is higher than class I. These capacitors are classified as having a semi-stable T.C..	温度特性介于 X7R 和 Y5V 之间，容量稳定性相对较差，对温度、电压等条件较敏感。 Temperature characteristic is between that of X7R and Y5V. The capacitance is unstable and sensible to temperature and voltage.	介电常数最大，但温度特性较差，对温度、电压等条件较敏感。 Y5V material has highest dielectric constant. Its capacitance and dissipation is sensible to temperature and voltage.
应用 Application	适用于低损耗，稳定性要求高的高频电路，如滤波器、振荡器和计时电路等。 Used in applications where low-losses and high-stability are required, such as filters, oscillators, and timing circuits so on.	适用于容量范围广，稳定性要求不高的电路中，如隔直、耦合、旁路及鉴频等电路中。 Used over a wide temperature range , such in these kinds of circuits, DC-blocking, coupling, bypassing, frequency discriminating etc.	适用于要求大容量，使用温度范围接近于室温的旁路、耦合等，及低直流偏压电路中。 Ideally suited for bypassing and coupling application circuits operating with low DC bias in the environment approaching to room temperature.	适用于要求大容量，温度变化不大的电路中 Used over a moderate temperature range in application where high capacitance is required.
容量范围 Available capacitance range	0.5pF~4.7nF	100pF~0.22uF	2.2nF~1.2uF	

订货代码 Ordering Code

$\frac{CT42}{\uparrow}$ - $\frac{104}{\uparrow}$ $\frac{M}{\uparrow}$ $\frac{17}{\uparrow}$ $\frac{Y}{\uparrow}$ $\frac{500}{\uparrow}$ $\frac{P}{\uparrow}$ $\frac{26}{\uparrow}$
 A B C D E F G H

A:

产品类别 Product Type	
CC42	I 类轴向引线陶瓷电容器 Class I Dielectric Axial Leaded Capacitor
CT42	II 类轴向引线陶瓷电容器 Class II Dielectric Axial Leaded Capacitor

B:

标称容量 Nominal Capacitance
前两位为有效数字，后一位表示零的个数。 First two digits are significant, and the third digit is number of zero. 例如 For example: 104=100000pF; 5R6=5.6pF

C:

容量偏差 Tolerance			
C	±0.25pF	K	±10%
D	±0.5pF	M	±20%
J	±5.0%	Z	-20~+80%

D:

本体长度（单位：英寸） Nominal Body Length (Unit: inches)			
15	0.15	19	0.19
16	0.16	20	0.20
17	0.17	25	0.25

E:

温度特性 Temperature Characteristics			
CG	C0G	0±30ppm/°C	-55~+125 °C
N	NP0		
B	X7R	±15%	-55~+125 °C
Y(F)	Y5V	-80%~+30%	-25~+85 °C
E	Z5U	-56%~+22%	+10~+85 °C

F:

额定电压 Rated Voltage
前两位为有效数字，后一位表示零的个数。 First two digits are significant, and the third digit is number of zero. 例如 For example: 500=50V; 101=100V

G:

包装方式 Packaging Style		
P	盒带包装 Ammo	编带 Tape
T	卷盒包装 Reel	
F	散包装 Bulk	

H:

引脚形式 Lead Configuration	
26	编带内距 Tape Width: 26mm
52	编带内距 Tape Width: 52mm
2	弯脚脚距: 5.08mm 5.08mm pitch formed lead
3	弯脚脚距: 7.5mm 7.5mm pitch formed lead
4	弯脚脚距: 10mm 10mm pitch formed lead

通用型引线 MLCC 可靠性及测试方法

Reliability and Test Method for General Leaded MLCC

项目 Item	技术要求 Technical Specification			测试方法和备注 Test Method and Remarks		
容量 Capacitance (C)	I 类 Class I	应符合指定的误差级别 within the specified tolerance.		标称容量 Capacitance	测试频率 Measuring Frequency	测试电压 Measuring Voltage
				≤1000pF	1MHZ±10%	1.0±0.2V
				> 1000 pF	1KHZ±10%	
	II 类 Class II	应符合指定的误差级别 within the specified tolerance.		对于 II 类电容器，测试前应先预处理 The capacitance should be pretreated before measured(only for class II).		
				测试频率 Measuring Frequency	测试电压 Measuring Voltage	
				1KHZ±10%	B: 1.0±0.2V	E/ Y/ F 0.3±0.2V
损耗角正切 Dissipation Factor (DF)	I 类 Class I	C _R ≥50pF DF≤0.15% C _R <50pF DF≤1.5[(150/C _R)+7] X10 ⁻⁴		标称容量 Capacitance	测试频率 Measuring Frequency	测试电压 Measuring Voltage
				≤1000pF	1MHZ±10%	1.0±0.2V
				> 1000 pF	1KHZ±10%	
	II 类 Class II	B	DF ≤3.5%	测试频率: 1KHZ±10%; Measuring Frequency 测试电压: 1.0±0.2V Measuring Voltage		
		E/ Y (F)	≤7.5% (C _R ≤ 0.1uF) ≤10.0% (1uF > C _R > 0.1uF) ≤15% (C _R ≥1uF)	测试频率: 1KHZ±10% Measuring Frequency 测试电压:0.3±0.2V Measuring Voltage		
绝缘电阻 Insulation Resistance	I 类 Class I	C≤10nF IR≥10000M Ω C>10nF R.C≥100 Ω F		测试电压:额定电压 Measuring Voltage: Rated Voltage		
	II 类 Class II	C≤25nF IR≥4000M Ω C>25nF R.C≥100 Ω F		测试时间: 60±5 秒 Duration: 60±5s		

项目 Item	技术要求 Technical Specification		测试方法和备注 Test Method and Remarks
耐电压 Withstand- ing Voltage	不应有介质被击穿或损伤 No breakdown or damage.		端子间 Between terminals: 测试电压 持续时间: 5±1 秒 Measuring Voltage : Duration: 5±1s I 类:300%额定电压 Class I :300% Rated voltage II 类:250%额定电压 Class II :250% Rated voltage 充/放电电流不应超过 50mA The charge/ discharge current is less than 50mA.
			端子与外装间 Between terminals and body: 施加电压: 2.5U _R 持续时间: 1~5s Voltage: 2.5 times rated voltage Duration: 1~5s 金属制小球法 Small metallic ball method 将电容器本体插入盛满直径为 1mm 的金属小球的容器中, 但保留距端头处 2mm 的本体不插入。试验电压施加在短路回路端子和金属小球之间。 Small metallic balls with 1mm diameters shall be put in a vessel and the test capacitor shall be submerged except 2mm from the top of its component body and the terminals. The test voltage shall be applied between the short-circuited terminals and the metallic balls.
可焊性 Solder ability	上锡率应大于 75% Lead wire shall be at least 75% covered with a new solder coating.		将电容器引线浸入含有 25% 松香的酒精溶液中, 然后浸入温度为 : 230±5℃ 的金属焊锡 (63Sn/37Pb) 中 2±0.5 秒, 注意: 电容器本体底面距 离锡面约 1.5~2mm, The terminal of capacitor is dipping into a 25% rosin solution of ethanol and then into molten solder(63Sn/37Pb) of 230±5℃ for 2±0.5s. In both cases the depth of dipping is up to about 1.5~2mm from the terminal body.
耐焊接热 Resistance to Soldering Heat	项目 Item	C/C≤	锡温: 260 ±5℃ 时间: 10 ±1s Solder temperature: 260 ±5℃ Duration: 10 ±1s
	Class I	± 2.5% or ± 0.25pF	浸入条件: 将电容器插入厚度为 1.6mm, 孔径为 1.0mm 的 PC 板。 Immersed conditions: Inserted into the PC board (with t=1.6mm, hole=1.0mm diameter)
	B	±10%	对于 I 类介质, 试验后, 应在标准条件下恢复 4~24 小时后才测试。
	E / Y(F)	±20%	Recovery: For class I, 4 to 24 hours of recovery under the standard condition after test.
	外观无可见损伤 No significant abnormality in appearance.		对于 II 类介质, 在试验前应首先进行如下预处理: 150(-10,+0) ℃, 1 小时, 接着在标准条件下恢复 48 ±4 小时。 Preconditioning (Class II) : 1 hour of preconditioning at 150(-10,+0) ℃, followed by 48 ±4 hours of recovery under the standard condition. 恢复: 对于 II 类介质试验后, 应在标准条件下恢复 48 ±4 小时后才测 试。 Recovery (Class II) : 48 ±4 hours of recovery under the standard condition after test.

项目 Item	技术要求 Technical Specification	测试方法和备注 Test Method and Remarks			
高温负荷 High Temperature Loading Test	外观无可见损伤 No significant abnormality in appearance.	温度 Temperature			
	容量变化 Capacitance Change: I 类介质 Class I: ≤ ±3% or ±0.3pF 取较大值 Whichever is larger. II 类介质 Class II: B: ≤ ±12.5% E / F(Y): ≤ ±30%	CG (N) /	X7R	Y5V	Z5U
		125(-0,+3)℃		85(-0,+3)℃	
	损耗角正切 Dissipation Factor: I 类介质: 小于原始值的两倍 Class I: Not more than twice of initial value. II 类介质 Class II: B: ≤ 5.0% E / F(Y): ≤12.5% (C _R ≤ 0.1uF) ≤15.0%(1uF > C _R > 0.1uF) ≤17.5% (C _R ≥1uF)	电压: 1.5 倍额定电压 Applied voltage: 1.5 times rated voltage 充放电流不超过 50mA The charge/ discharge current is less than 50mA. 时间: 1000 (-0, +48) 小时 Duration: 1000 (-0, +48) hours 恢复时间: Recovery Time: I 类介质: 24 ±2 小时, Class I Dielectric : 24 ±2 hours II 类介质: 48 ±4 小时。 Class II Dielectric: 48 ±4 hours			
		绝缘电阻 Insulation Resistance: ≥ 500MΩ or 25 Ω.F 取较小值 Whichever is smaller.			
耐溶剂性 Solvent Resistance	外观无可见损伤或异常,标记清晰。 No defects or abnormalities in appearance and legible marking.	溶剂温度: 23±5℃ Solvent temperature: 将样品浸在溶剂中 1 分钟, 用脱脂棉在样品有标志部位刷 10 次, 重复 3 次。 put the sample into solvent 1 Min, and then take it out and brush sample ' s notation area 10 times with pledget , repeat 3 times.			

* 以上所示“标准条件”解释如下:

温度: 5~35℃, 湿度: 45~85%, 气压: 86~106kPa * Note on standard condition: "

standard condition " referred to herein should be defined as follows:

5 to 35℃ of temperature, 45 to 75% of relative humidity, and 86 to 106kPa of atmospheric pressure.

若测试结果有争议时, 仲裁试验用标准大气条件为: 温

度: 25 \pm 1℃, 相对湿度: 48%~52%, 气压: 86~106kPa

* When there are questions concerning measurement results:

In order to provide correlation data, the test should be conducted under a condition of 25 degrees plus/minus 1 centigrade of temperature, 48% through 52% of relative humidity and 86 through 106 kPa of atmospheric pressure.

尺寸、工作电压、容量关系表

Size Code, Voltage VS Capacitance

尺寸规格 Size Code	外形尺寸(单位: mm) Dimension(Unit: mm)						工作电压 Voltage	标称容量范围 Available Capacitance Range		
	Lmax	Dmax	F (±0.6)			d (±0.05)		C0G (NP0)	X7R	Z5U/ Y5V
			F2	F3	F4					
15	3.8	2.5	5.08	7.5	10.0	0.45	25V 50V 100V	0R3~102 0R3~102 0R3~821	101~154 101~104 101~103	102~105 102~474 102~683
16	4.0	2.5	5.08	7.5	10.0	0.45	25V 50V 100V	0R5~272 0R5~222 0R5~102	101~224 101~104 101~333	102~125 102~105 102~104
17	4.3	2.5	5.08	7.5	10.0	0.45	25V 50V 100V	0R5~272 0R5~222 0R5~102	101~224 101~104 101~333	102~125 102~105 102~104
19	4.8	3.0	—	7.5	10.0	0.45	25V 50V 100V	0R5~562 0R5~472 0R5~332	101~105 102~474 101~104	102~125 102~105 102~334
20	5.1	3.0	—	7.5	10.0	0.45	25V 50V 100V	0R5~562 0R5~472 0R5~332	101~105 102~474 101~104	102~125 102~105 102~334
25	6.3	3.5	—	—	10.0	0.45	25V 50V 100V	0R5~562 0R5~472 0R5~332	101~105 101~474 101~104	102~125 102~105 102~334

其它规格请直接和我们联系。

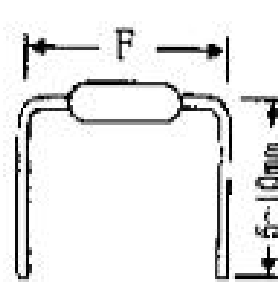
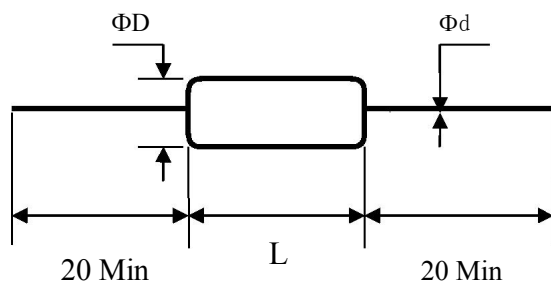
Others are available, contact FH.

外形尺寸

External Dimensions

单品

Bulk Products

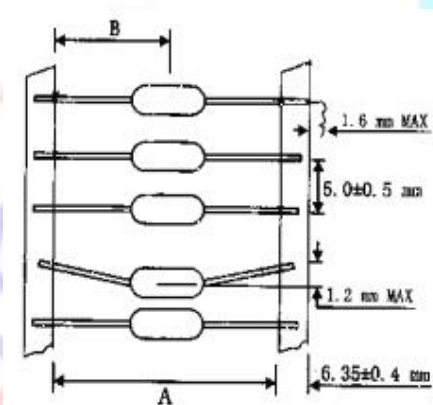


编带尺寸

Taping Dimensions

单位 Unit: mm

编带方式 Tape Style	A	B
编带内距: 26 Tape Width:	26 ± 1.5	13 ± 0.76
编带内距: 52.4 Tape Width:	52.4 ± 1.5	26.2 ± 0.76

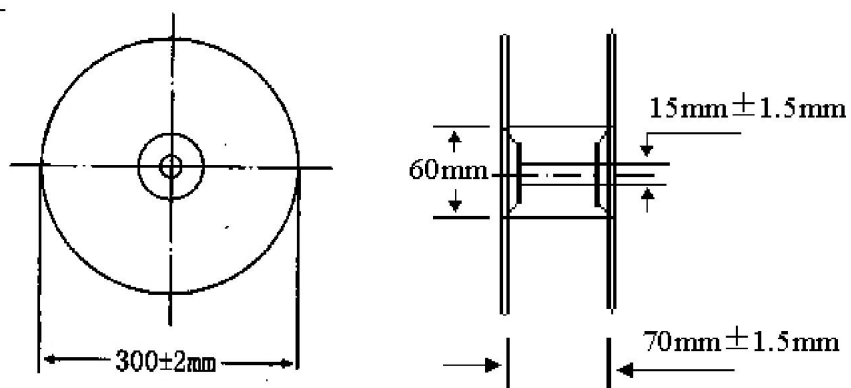


包装

Packaging

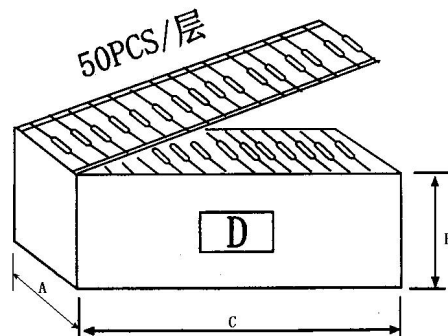
卷带包装

Tape and Reel Packaging



盒带包装

Ammo Packaging



编带方式 Tape Style	A ±5 mm	B ±5mm	C ±5mm	D
52.4 mm	81	72	258	贴标签 Lable
26 mm	50	110	258	

包装数量

Packaging Quantity

尺寸规格 Size Code	卷带包装 Tape and Reel	盒带包装 Ammo	散包装 Bulk
15	5000	5000	1000
16	5000	5000	1000
17	5000	5000	1000
19	2500	2500	500
20	2500	2500	500
25	2500	2500	500